



Plusline Compact

Plusline C 100W R7s 240V 1BC/10

Mains-voltage linear lamp giving white halogen light

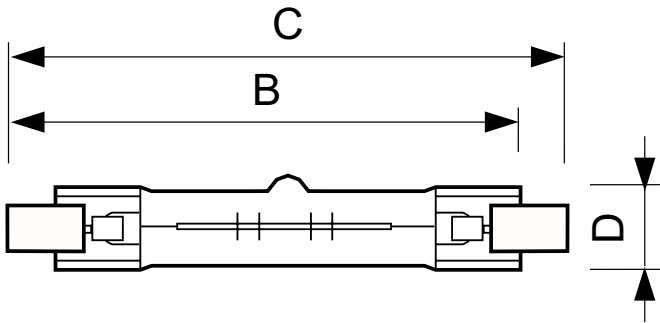
Product data

General Information	
Cap base	R7S [R7s]
Burning Position	UNIVERSAL [Any/Universal]
Nominal lifetime (nom.)	2000 h
Light Technical	
Lamp Luminous Flux 25°C EL (Nom)	1550 lm
Lamp Luminous Efficacy EM (Nom)	15.5 lm/W
Colour Rendering Index,horiz (Nom)	100
Operating and Electrical	
Power (Rated) (Nom)	100 W
Lamp current (nom.)	0.42 A
Starting time (nom.)	0.0 s
Voltage (Nom)	240 V
Controls and Dimming	
Dimmable	Yes
Mechanical and Housing	
Lamp Finish	Clear

Cap-base information	10
Approval and Application	
Energy efficiency label (EEL)	D
Luminaire Design Requirements	
Bulb temperature (max.)	900 °C
Pinch temperature (max.)	350 °C
Product Data	
Full product code	871150090173625
Order product name	Plusline C 100W R7s 240V 1BC/10
EAN/UPC – product	8711500901736
Order code	923920045792
SAP numerator – quantity per pack	1
Numerator – packs per outer box	10
SAP material	923920045792
SAP net weight (piece)	0.008 kg
ILCOS code	HDG//RS-100-240-R7s-74,9

Plusline Compact

Dimensional drawing



Product	D (max)	B (max)	B	B (min)	C (max)
Plusline C 100W R7s 240V 1BC/10	15 mm	76.5 mm	74.9 mm	73.3 mm	78.3 mm

DEComp 100W R7s 240V T3 CL

