



CorePro LEDtube EM/ Mains



CorePro LEDtube 1200mm HO 18W 840 T8

The CorePro LEDtube is an affordable LED solution suitable for replacing T8 fluorescent lamps. The product provides a natural lighting effect for use in general lighting applications, as well as instant energy savings – an environmentally friendly solution.

Warnings and Safety

• -

Product data

| General Information | | Operating and Electrical | |
|--|----------------------------------|----------------------------------|-------------|
| Cap base | G13 [Medium Bi-Pin Fluorescent] | Input frequency | 50 to 60 Hz |
| EU RoHS compliant | Yes | Power (Rated) (Nom) | 18 W |
| Nominal lifetime (nom.) | 30000 h | Starting time (nom.) | 0.5 s |
| Switching cycle | 200,000X | Warm-up time to 60% light (nom.) | 0.5 s |
| | Sphere | Power factor (nom.) | 0.9 |
| | | Voltage (Nom) | 220-240 V |
| Light Technical | | Temperature | |
| Colour Code | 840 [CCT of 4,000 K] | T-ambient (max.) | 45 °C |
| Technical Beam Angle (Nom) | 240 ° | T-ambient (min.) | -20 °C |
| Lamp Luminous Flux 25°C EL (Nom) | 2000 lm | T storage (max.) | 65 °C |
| Colour Designation | Cool White (CW) | T storage (min.) | -40 °C |
| Colour Temperature, horizontal (Nom) | 4000 K | T-Case maximum (nom.) | 50 °C |
| Lamp Luminous Efficacy EM (Nom) | 111.00 lm/W | | |
| Colour consistency | <6 | Controls and Dimming | |
| Colour Rendering Index,horiz (Nom) | 80 | Dimmable | No |
| LLMF at end of nominal lifetime (nom.) | 70 % | | |

CorePro LEDtube EM/Mains

Mechanical and Housing

| | |
|----------------|--------------------|
| Bulb material | Glass |
| Product length | 1200 mm |
| Bulb shape | Tube, double-ended |

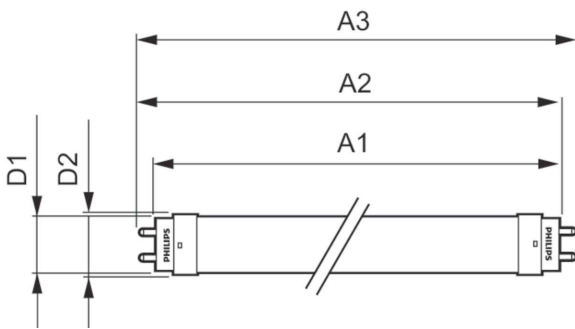
Approval and Application

| | |
|------------------------------------|--|
| Energy Efficiency Class | E |
| Energy-saving product | Yes |
| Approval marks | CE marking RoHS compliance KEMA Keur certificate |
| Energy consumption kWh/1,000 hours | 18 kWh 491843 |

Product Data

| | |
|-----------------------------------|--------------------------------------|
| Full product code | 871869680613500 |
| Order product name | CorePro LEDtube 1200mm HO 18W 840 T8 |
| EAN/UPC – product | 8718696806135 |
| Order code | 929001874902 |
| SAP numerator – quantity per pack | 1 |
| Numerator – packs per outer box | 10 |
| SAP material | 929001874902 |
| SAP net weight (piece) | 0.215 kg |

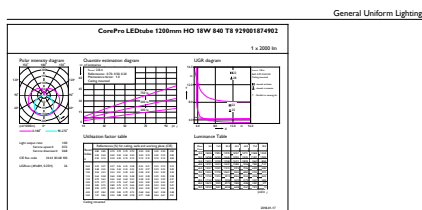
Dimensional drawing



TLED 1200mm 18W-36W 2000lm 240D 4000K

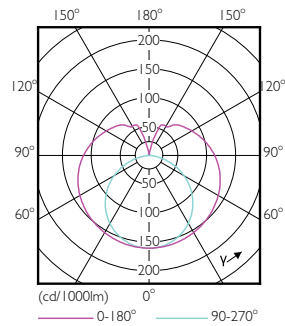
| Product | D1 | D2 | A1 | A2 | A3 |
|--------------------------------------|---------|-------|---------|---------|---------|
| CorePro LEDtube 1200mm HO 18W 840 T8 | 25.7 mm | 28 mm | 1198 mm | 1205 mm | 1212 mm |

Photometric data



CatLight Proometrics 4.5 Philips Lighting B.V. Page 1/7

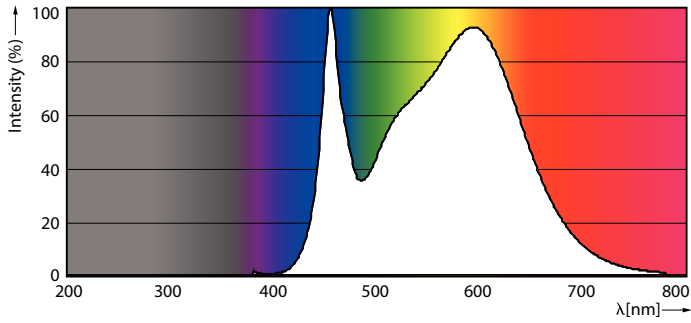
18W G13 840 4000K



18W G13 840 4000K

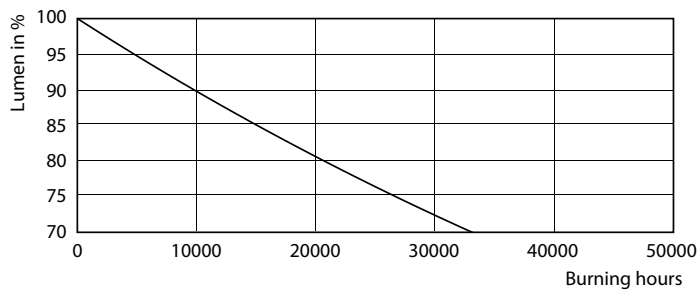
CorePro LEDtube EM/Mains

Photometric data

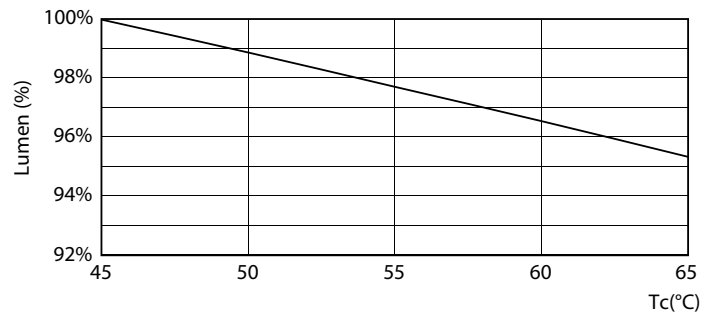


18W G13

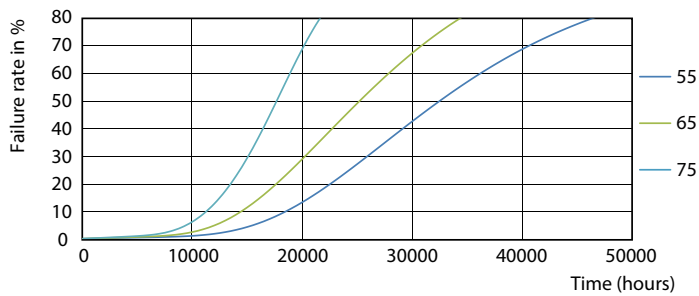
Lifetime



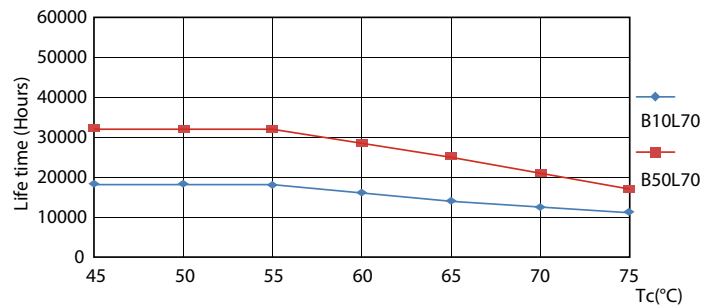
18W G13



18W G13



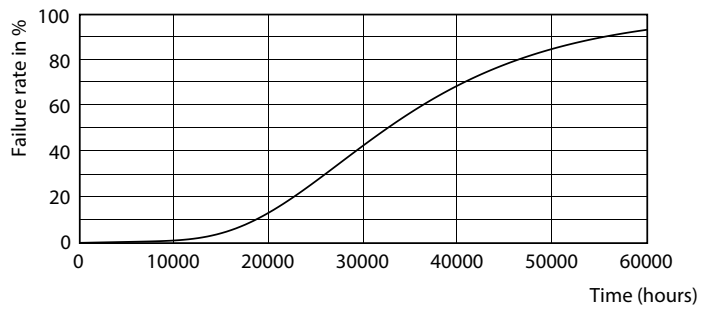
18W G13



18W G13

CorePro LEDtube EM/Mains

Lifetime



18W G13

