



CorePro LEDtube EM/ Mains

CorePro LEDtube 1500mm HO 24W 865 T8

The CorePro LEDtube is an affordable LED solution suitable for replacing T8 fluorescent lamps. The product provides a natural lighting effect for use in general lighting applications, as well as instant energy savings – an environmentally friendly solution.

Warnings and Safety

• -

Product data

| General Information | |
|-------------------------|----------------------------------|
| Cap base | G13 [Medium Bi-Pin Fluorescent] |
| EU RoHS compliant | Yes |
| Nominal lifetime (nom.) | 30000 h |
| Switching cycle | 200,000X |
| Technical type | LEDTECH-LOV |
| | Sphere |

| Light Technical | |
|--------------------------------------|-----------------------|
| Colour Code | 865 [CCT of 6,500 K] |
| Technical Beam Angle (Nom) | 240 ° |
| Lamp Luminous Flux 25°C EL (Nom) | 2700 lm |
| Colour Designation | Cool Daylight |
| Colour Temperature, horizontal (Nom) | 6500 K |
| Lamp Luminous Efficacy EM (Nom) | 112.00 lm/W |
| Colour consistency | <6 |
| Colour Rendering Index,horiz (Nom) | 80 |

| LLMF at end of nominal lifetime (nom.) 70 % | |
|---|--|
|---|--|

| Operating and Electrical | |
|----------------------------------|-------------|
| Input frequency | 50 to 60 Hz |
| Power (Rated) (Nom) | 24 W |
| Lamp current (nom.) | 120 mA |
| Starting time (nom.) | 0.5 s |
| Warm-up time to 60% light (nom.) | 0.5 s |
| Power factor (nom.) | 0.9 |
| Voltage (Nom) | 220-240 V |

| Temperature | |
|-----------------------|--------|
| T-ambient (max.) | 45 °C |
| T-ambient (min.) | -20 °C |
| T storage (max.) | 65 °C |
| T storage (min.) | -40 °C |
| T-Case maximum (nom.) | 55 °C |

CorePro LEDtube EM/Mains

Controls and Dimming

| | |
|----------|----|
| Dimmable | No |
|----------|----|

Mechanical and Housing

| | |
|----------------|--------------------|
| Lamp Finish | Frosted |
| Bulb material | Glass |
| Product length | 1500 mm |
| Bulb shape | Tube, double-ended |

Approval and Application

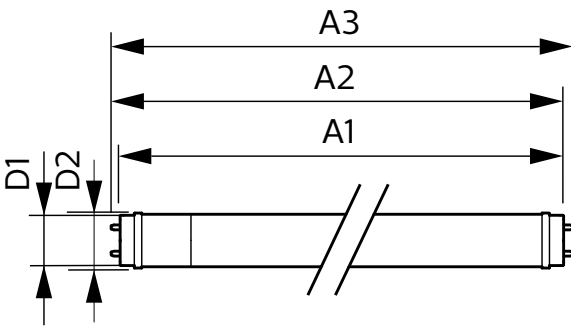
| | |
|-------------------------|--|
| Energy Efficiency Class | E |
| Energy-saving product | Yes |
| Approval marks | RoHS compliance CE marking KEMA Keur certificate |

| | |
|------------------------------------|--------|
| Energy consumption kWh/1,000 hours | 24 kWh |
| | 491844 |

Product Data

| | |
|-----------------------------------|--------------------------------------|
| Full product code | 871869680615900 |
| Order product name | CorePro LEDtube 1500mm HO 24W 865 T8 |
| EAN/UPC – product | 8718696806159 |
| Order code | 929001875002 |
| SAP numerator – quantity per pack | 1 |
| Numerator – packs per outer box | 10 |
| SAP material | 929001875002 |
| SAP net weight (piece) | 0.270 kg |

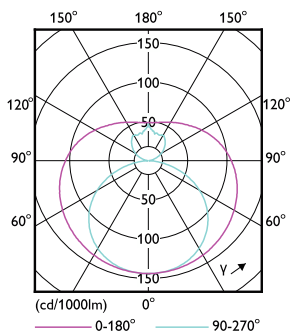
Dimensional drawing



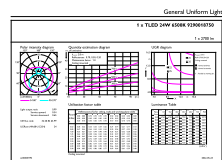
CorePro LEDtube 1500mm HO 24W 865 T8

| Product | D1 | D2 | A1 | A2 | A3 |
|--------------------------------------|---------|-------|---------|-----------|-----------|
| CorePro LEDtube 1500mm HO 24W 865 T8 | 25.7 mm | 28 mm | 1500 mm | 1507.1 mm | 1514.2 mm |

Photometric data



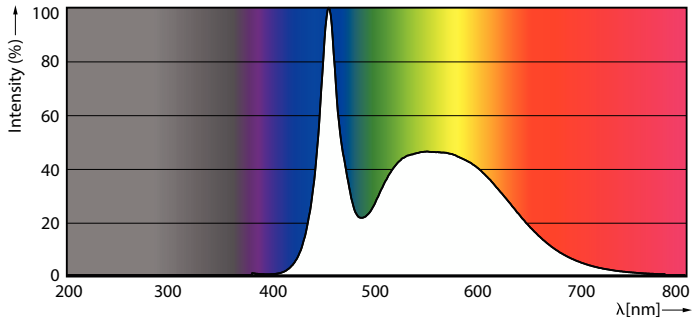
Light Distribution Diagram



General uniform lighting

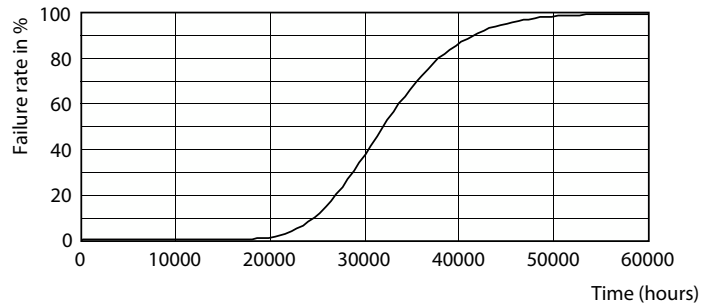
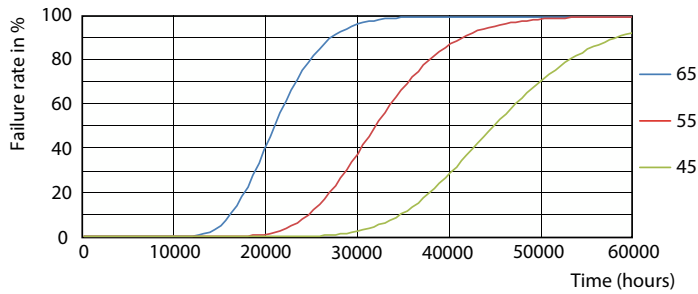
CorePro LEDtube EM/Mains

Photometric data



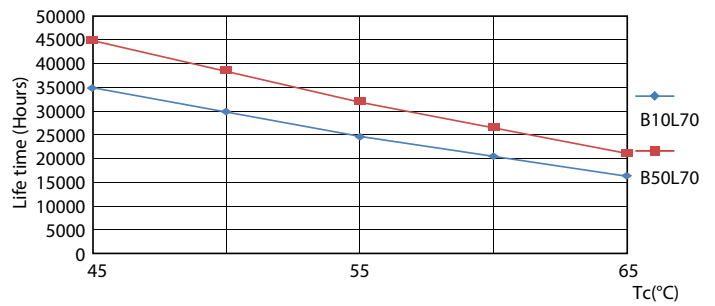
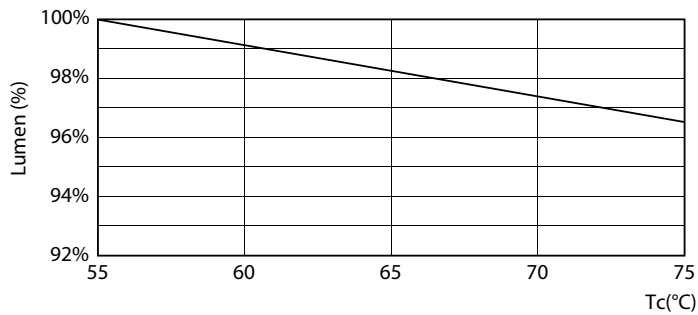
Spectral Power Distribution Colour

Lifetime



FailureRate

Life Expectancy Diagram

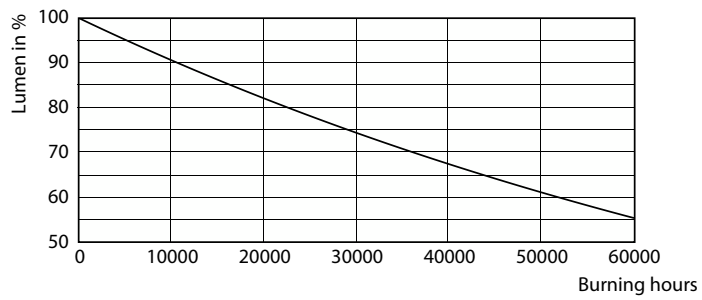


LumenVsTc

LifetimeVsTc

CorePro LEDtube EM/Mains

Lifetime



Lumen Maintenance Diagram

