



# SmartBright LED Downlight DN029B

## DN029B G2 LED10/CCT PSR-E D120 CAU

The SmartBright Downlight family is the perfect energy-efficient LED replacement for conventional downlights. It offers three solutions: Solution 1; The energy-efficient LED replacement for conventional downlights; Essential SmartBright Downlight G3 DN029B-1 – this trailing- and leading-edge dimmable downlight is the ideal functional replacement for conventional downlights. This affordable and easy-to-install fitting delivers high energy savings without compromising on light quality. Solution 2; Select the right colour temperature to suit your style; This hassle-free Essential SmartBright DN029B-2 downlight provides you with the flexibility to select the perfect colour temperature (Warm White/Cool White/Day Light) for the required use. Integrated with trailing/leading edge dimming capability, this affordable and easy-to-install fitting delivers high energy savings without compromising on light quality. Solution 3; Enjoy the flexibility of a dimmable fitting without paying more; The Essential SmartBright DN029B-3 step dimming downlight is the perfect hassle-free replacement for conventional dimmable downlights. Adjust the light level directly from the switch and save money with installation as a dimmer unit is not required.

### Product data

General Information	
Lamp colour code	3000/4000/6500
Light source replaceable	No
Luminaire light beam spread	100°
Connection	Plug-in connector 2-pole
Protection class IEC	Safety class II (II)

Operating and Electrical	
Input Voltage	220 to 240 V V
Input frequency	50 or 60 Hz
Power factor (min.)	0.8

Controls and Dimming	
Dimmable	Yes

# SmartBright LED Downlight DN029B

## Mechanical and Housing

Housing material	Metal-Plastic
Reflector material	Polycarbonate
Optic material	Polycarbonate
Fixation material	Stainless steel
Optical cover/lens finish	Frosted
Overall length	225 mm
Overall width	225 mm
Overall height	59 mm
Overall diameter	140 mm
Colour	White
Dimensions (height x width x depth)	59 x 225 x 225 mm (2.3 x 8.9 x 8.9 in)

## Approval and Application

Ingress protection code	IP40/IP54 front
Mech. impact protection code	IK03 [ 0.3 J]

## Initial Performance (IEC Compliant)

Initial luminous flux (system flux)	1000 lm
Initial LED luminaire efficacy	111.00 lm/W
Lamp colour temperature	3000 4000 6500 K
Colour Rendering Index	80

Initial chromaticity	(3000K@, 0.4400, 0.40304000K@0.37600.36566500K@0.31300.3370) 6
Initial input power	9 W
Power consumption tolerance	+/-10%

## Over Time Performance (IEC Compliant)

Median useful life L70B50	30000 h
---------------------------	---------

## Application Conditions

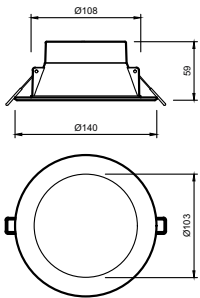
Ambient temperature range	-20 to +40 °C
---------------------------	---------------

## Product Data

Full product code	871951425183000
Order product name	DN029B G2 LED10/CCT PSR-E D120 CAU
EAN/UPC – product	8719514251830
Order code	929002531419
SAP numerator – quantity per pack	1
Numerator – packs per outer box	12
SAP material	929002531419
SAP net weight (piece)	0.315 kg



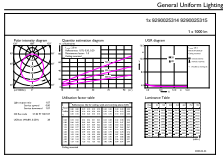
## Dimensional drawing



DN029B G2 LED10 3CCT 12W D120 DIM AU

# SmartBright LED Downlight DN029B

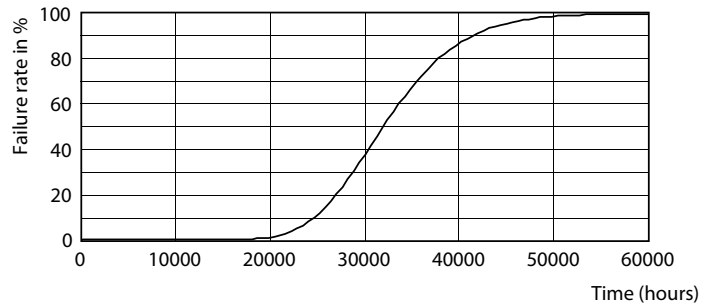
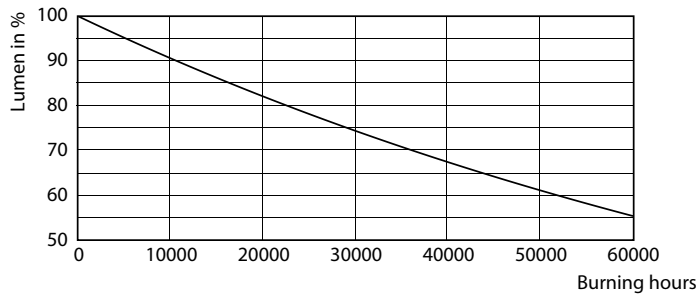
## Photometric data



© Philips Lighting N.V. 2021

## Downlight DN029B G2 LED10 PSR D120

### Lifetime



## B50L70 30K LMP

## B50L70 30K LED

