



# SmartBright LED Downlight DN029B

## DN029B G2 LED8/NW PSR-E D90 CAU 20-PK

The SmartBright Downlight family is the perfect energy-efficient LED replacement for conventional downlights. It offers three solutions: Solution 1; The energy-efficient LED replacement for conventional downlights; Essential SmartBright Downlight G3 DN029B-1 – this trailing- and leading-edge dimmable downlight is the ideal functional replacement for conventional downlights. This affordable and easy-to-install fitting delivers high energy savings without compromising on light quality.; Solution 2; Select the right colour temperature to suit your style; This hassle-free Essential SmartBright DN029B-2 downlight provides you with the flexibility to select the perfect colour temperature (Warm White/Cool White/Day Light) for the required use. Integrated with trailing/leading edge dimming capability, this affordable and easy-to-install fitting delivers high energy savings without compromising on light quality.; Solution 3; Enjoy the flexibility of a dimmable fitting without paying more; The Essential SmartBright DN029B-3 step dimming downlight is the perfect hassle-free replacement for conventional dimmable downlights. Adjust the light level directly from the switch and save money with installation as a dimmer unit is not required.

### Product data

General Information		Input frequency		50 or 60 Hz
Lamp colour code	840 neutral white	Power factor (min.)	0.5	
Light source replaceable	No	<b>Controls and Dimming</b>		
Luminaire light beam spread	100°	Dimmable	Yes	
Connection	Plug-in connector 2-pole	<b>Mechanical and Housing</b>		
Protection class IEC	Safety class II (II)	Housing material	Plastic	
<b>Operating and Electrical</b>		Reflector material	Polycarbonate	
Input Voltage	220 to 240 V V			

# SmartBright LED Downlight DN029B

Optic material	Polycarbonate
Fixation material	Stainless steel
Optical cover/lens finish	Frosted
Overall length	90 mm
Overall width	90 mm
Overall height	56 mm
Overall diameter	114 mm
Colour	White
Dimensions (height x width x depth)	56 x 90 x 90 mm (2.2 x 3.5 x 3.5 in)

## Approval and Application

Ingress protection code	IP40/IP54 front
Mech. impact protection code	IK03 [ 0.3 J]

## Initial Performance (IEC Compliant)

Initial luminous flux (system flux)	800 lm
Initial LED luminaire efficacy	106.00 lm/W
Lamp colour temperature	4000 K
Colour Rendering Index	80
Initial chromaticity	(4000K@, 0.3800, 0.3800) 6

Initial input power	7.5 W
Power consumption tolerance	+/-10%

## Over Time Performance (IEC Compliant)

Median useful life L70B50	20000 h
---------------------------	---------

## Application Conditions

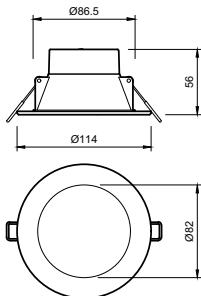
Ambient temperature range	-20 to +40 °C
---------------------------	---------------

## Product Data

Full product code	871951425194600
Order product name	DN029B G2 LED8/NW PSR-E D90 CAU 20-PK
Order code	929002531949
SAP numerator – quantity per pack	1
Numerator – packs per outer box	1
SAP material	929002531949
SAP net weight (piece)	0.000 kg

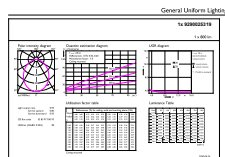


## Dimensional drawing



DN029B G2 LED8 840 10W D90 DIM AU

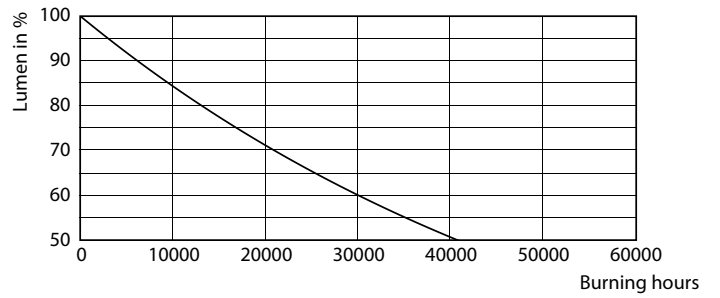
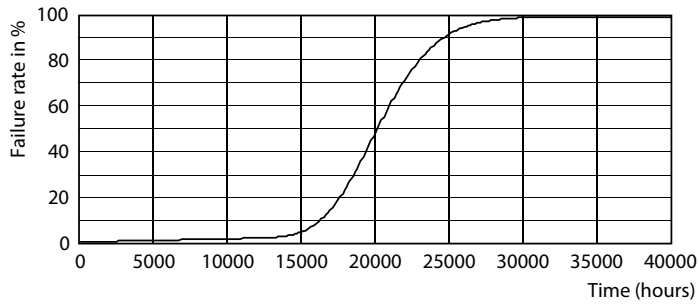
## Photometric data



Downlight DN029B G2 LED8 NW PSR D90

# SmartBright LED Downlight DN029B

## Lifetime



B50L70 20K LED

B50L70 20K LMP

